

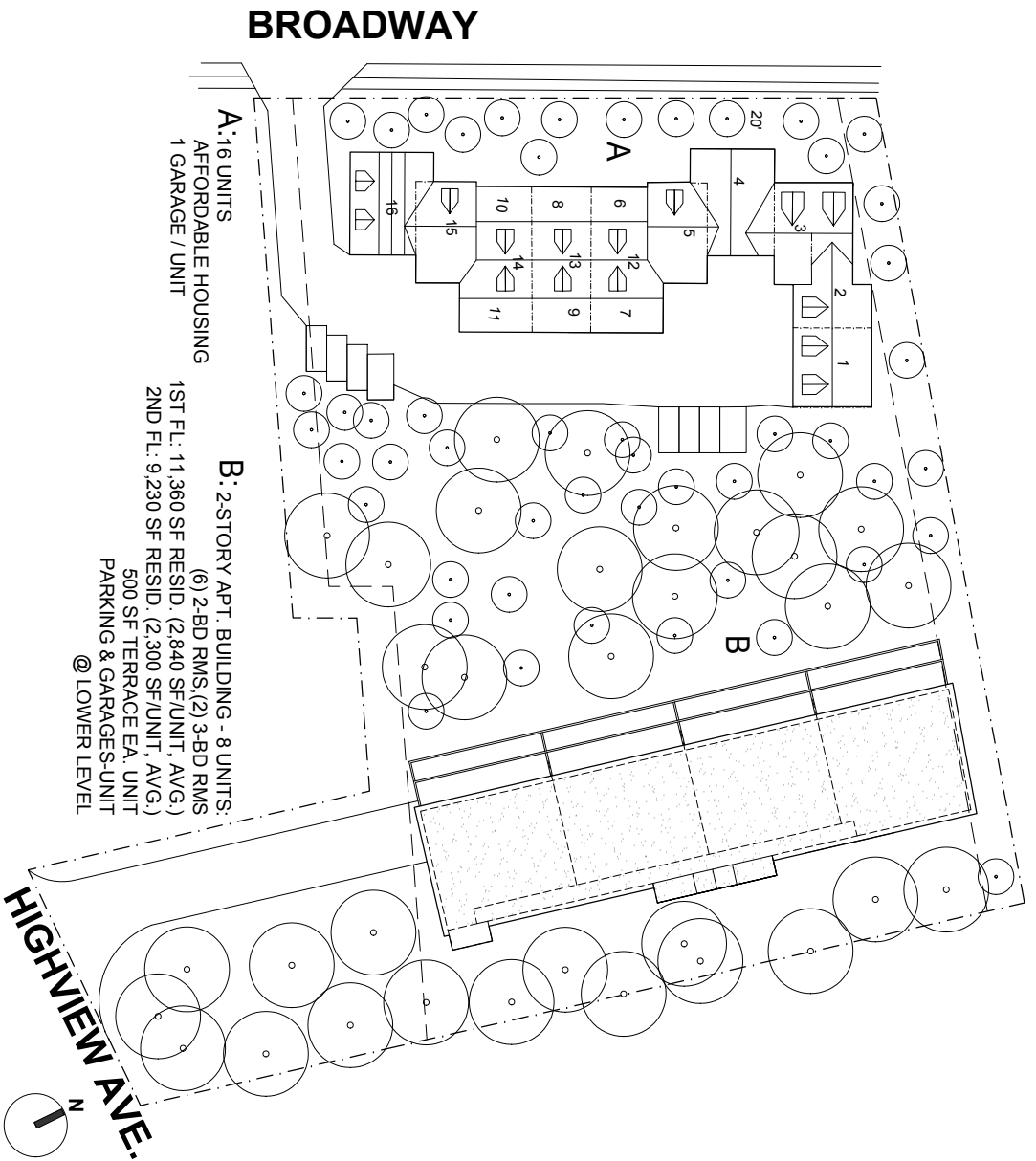
EOI for
North Broadway
Affordable Housing
Development

Attachment 4:
Conceptual
Development Plans

*(Attached from Appendix C:
Conceptual Development Plan*

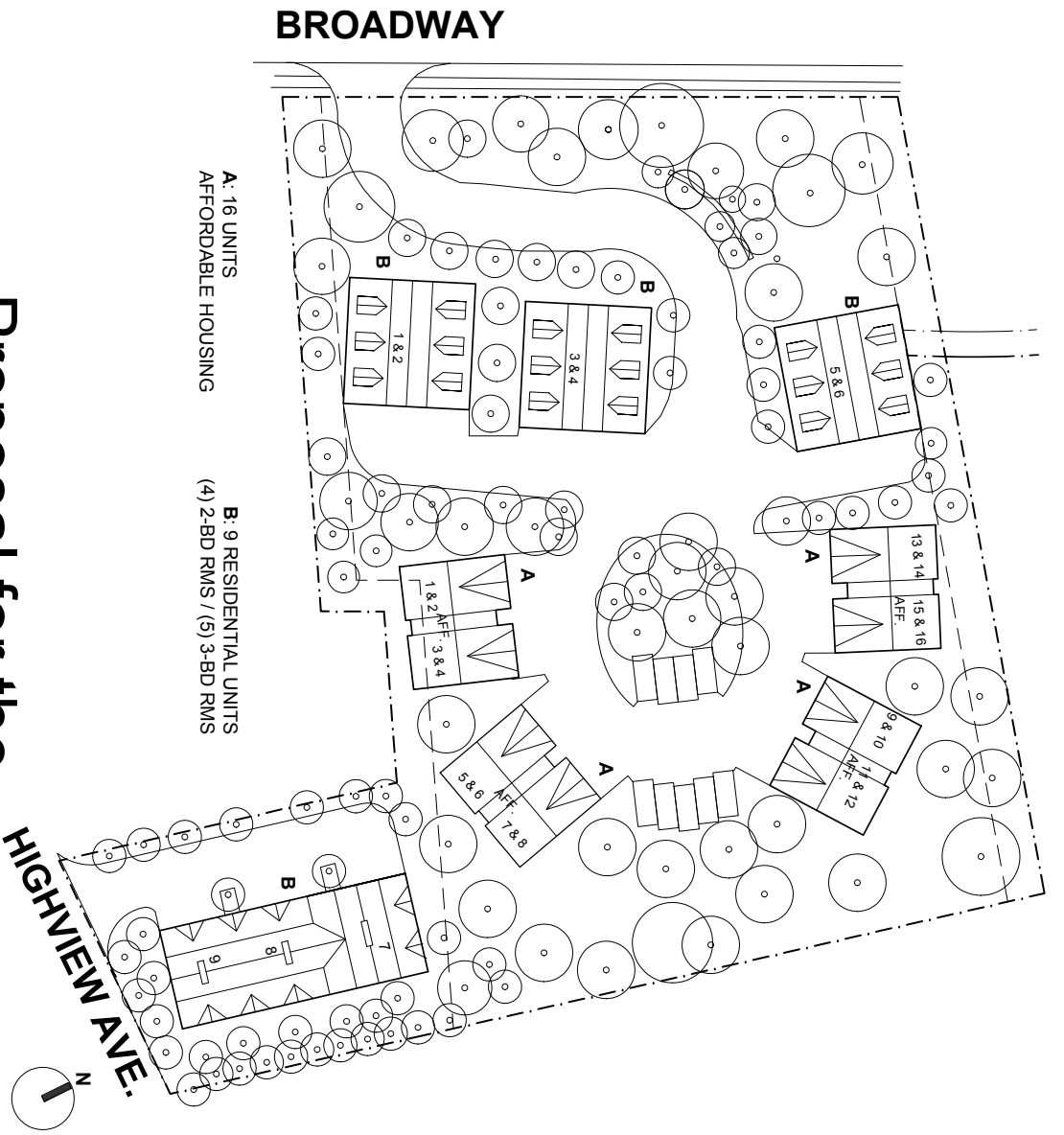
DEVELOPMENT OF AFFORDABLE HOUSING North Broadway, Woodcliff Lake NJ

Proposal for the Site Plan - Option 1



MORPURGO ARCHITECTS
Eighteen Sycamore Ave.
Ho. Ho. Kus NJ 07423
morpurgoarchitects.com
201-444-8333

2" = 10'
0" 5" 10" 20" 40"
1/32" = 1'-0"



Proposal for the
DEVELOPMENT OF AFFORDABLE HOUSING
 North Broadway, Woodcliff Lake NJ

Site Plan - Option 2

ORPURGO ARCHITECTS

Eighteen Sycamore Ave.
 Ho. Ho. Kus NJ 07423
 morpurgoarhitects.com
 201-444-8333

1/32" = 1'-0"



The Dutch Colonial models pictured in the renderings above and below are representative of the construction design that will be utilized on all Broadway facing units, in both Options 1 & 2.



This is the preferred design of affordable units in Option 2.

